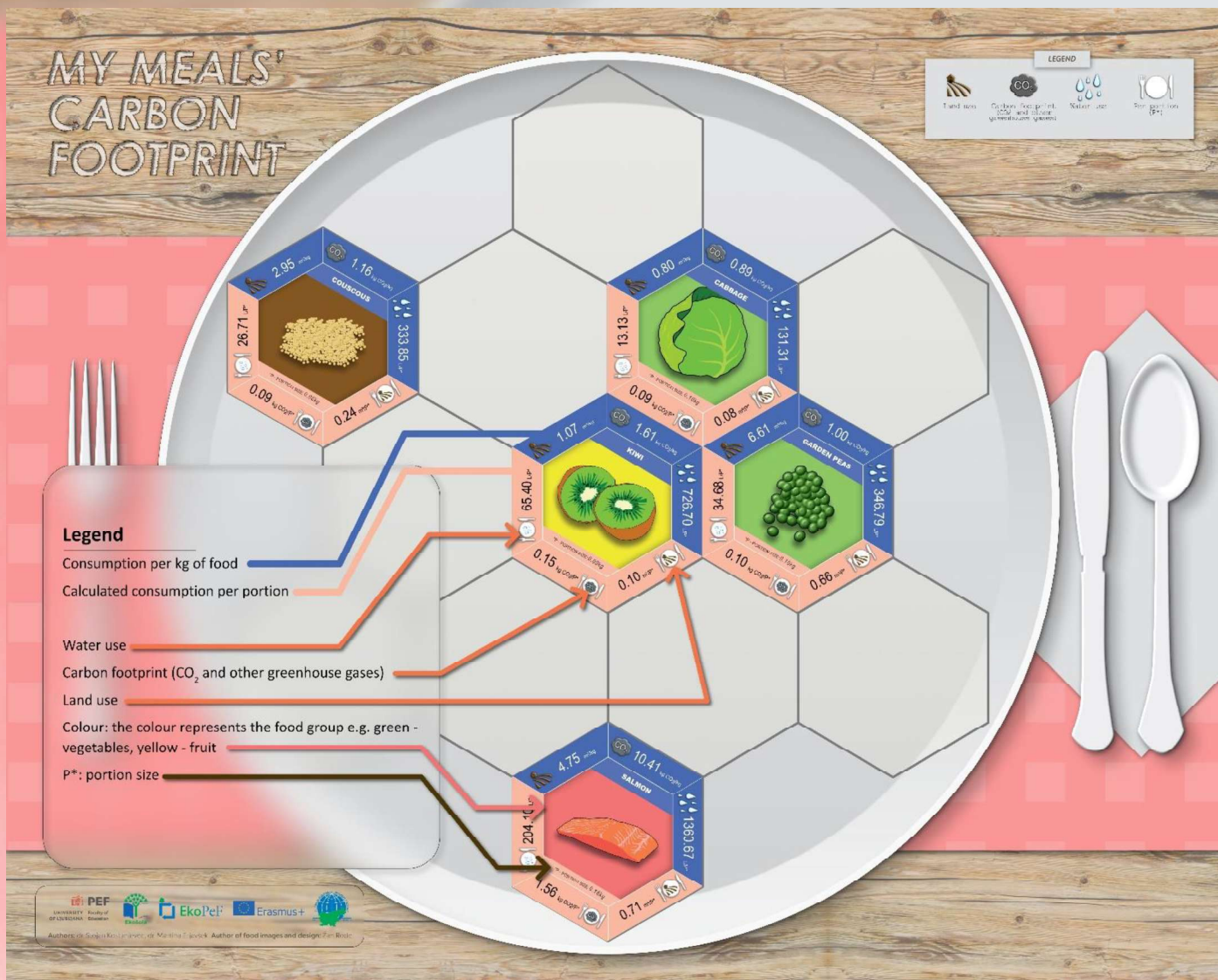


INSTRUCTIONS

The cards are designed to help you learn about the environmental footprint of food, which is the impact of food production, processing, transport, storage and consumption on the environment.

The card provides information on the land use for growing and rearing, the water use to produce the food and the carbon footprint of the food, which includes the amount of greenhouse gases produced during the production and final consumption of the food. The data on the cards are given per kilogram of food and per specific portion size (Figure).

The carbon footprint data are taken from the online database www.ourworldindata.org*



Slika 1: Game board with Food Environmental Footprint Data Cards.

*Source: Michael Clark et al (2022). Estimating the environmental impacts of 57,000 food products. PNAS. – processed by Our World in Data.